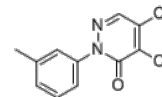


Product Name : LCS-1
Cat. No. : PC-62031
CAS No. : 41931-13-9
Molecular Formula : C₁₁H₈Cl₂N₂O
Molecular Weight : 255.098
Target : Other Targets
Solubility : 10 mM in DMSO



Biological Activity

LCS-1 is a small molecule that inhibits growth of human lung adenocarcinoma cells harboring mutations in **EGFR** or **KRAS** with IC₅₀ of 0.1-1.5 uM.

Superoxide dismutase 1 (SOD1) is the most likely target of LCS-1, LCS-1 inhibits SOD1 in a dose-dependent manner with IC₅₀ of 1.07 uM.

SOD1 is an LCS-1-binding protein that may act in concert with mutant proteins, such as EGFR and KRAS, to promote cell growth.

References

Somwar R, et al. *J Biomol Screen*. 2009 Dec;14(10):1176-84.

Somwar R, et al. *Proc Natl Acad Sci U S A*. 2011 Sep 27;108(39):16375-80.

Sajesh BV, et al. *Oncotarget*. 2015 Sep 29;6(29):27907-22.

Caution: Product has not been fully validated for medical applications. Lab Use Only!

E-mail: tech@probechem.com